



Solar Mounting Solutions

Residential Series Brochure



PV-ezRACK®

At **PVezRack®** our heritage is founded on the art of engineering and a culture of collaboration. We've built our legacy with a future focus that still stays true to the fundamentals of sustainable design. We have built a collaborative culture amongst stakeholders from across our industry, which was critical for us to deliver on our mission. We offer the solar industry, versatile mounting equipment for every application.

PVezRack® is the flagship product line from Clenergy, which has been designing products since 2007 and has grown into an Australian solar industry icon with its products sold across 30 countries. Our ongoing research and development is backed by a culture of open innovation, excellence through quality and being service focused.

We develop for optimal functionality, with an emphasis on simplicity for aesthetically brilliant projects. Our technically advanced solar mounting gear is complemented by unique kliplok clamps and accessories, as well as our unparalleled logistics & operations team, with an emphasis on customer service.



Photo Credit: (Top) Platinum Solar Designs
(Middle Left) RACV Solar / (Middle Right) Solar Shop

Clenergy is a veteran manufacturer with startup roots in Melbourne, Australia, we have earned a solid reputation throughout the nation and across APAC, because of a proven track record of success.

We bring our expertise to the table to provide your company and engineers with creative insights, and attention to detail.

Global Associations





INDEX

SolarRoof Origin P4 - P5

Global Product Certifications



Shanghai Stock Exchange - SHA : 603628

SolarRoof		Ground Structure	
Non-Penetrative	P6	ezShade Pergola	P14
Penetrative	P7	ezshade	P15
Tile	P8		
Adjustable Tilt	P9		
Ascent	P10		
ComT	P11		
SolarBase	P12		
SolarTripod	P13		

Merch Store P16 - P17

SolarRoof Origin

SolarRoof is designed for functionality, with an emphasis on simplicity for cost-effective projects.

Progressive and with superior fastening, this is an extraordinary solar mounting series.

SolarRoof's new line '**Clenergy Hollywood**' gives solar mounting a completely black finish to give your solar installation that premium prestige.

SolarRoof equipment with its exquisite attention to detail and enhanced levels of versatility is a favourite within the industry.

All products come with a 10-year product warranty. The range uses stainless steel or aluminium, and hence it can be installed even in the harshest of corrosive environments.



SOLAR
MOUNTING
SYSTEMS

High Corrosion Resistance

PV-ezRack® has interfaces, rails and clamps which are made from the highest quality, robust and corrosion-resistant materials including structural grade alloys. Reliable components designed for the harshest of outdoor environments.

We supply rail made in China, and additionally our Australian made – **Cutter Rail**.



Our black series range with smart features and clean lines to give your panels a plush look. Immerse yourself in form, function and flair for the ultimate indulgent solar experience.

From elegant rails for a minimalist design to clamps for a luxurious finish, elevating your solar experience is within reach.



[View All Series](#)



Photo Credit: (Left) Platinum Solar Designs / (Right) Hines Electric

Non-Penetrative

The non-penetrative range of clamps fastens the solar mounting structure to the tin roofing sheet. PVezRack® has a range of clamps, where some are custom-made to a specific roof sheet, and some are adaptable to a range of different roof sheets, a.k.a. our universal kliplok clamp.

This system allows installation on pitched and flat roofs. It withstands wind speeds up to 88 metres per second through its robust design and high-quality materials.

Corrosion resistance is achieved through anodised structural grade aluminium and stainless steel components.

The fully compliant clip-on clamps are non-invasive on concealed type roofs, and the optional adjustable tilt legs provide flexibility in application.

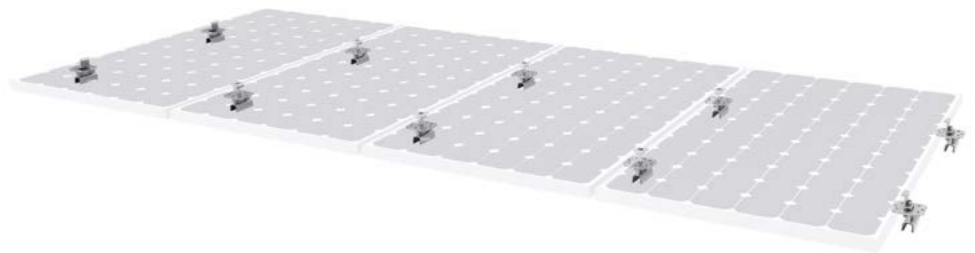


Tin Roof Mounting System

Designed for Concealed Roof Claddings (Klip-lok, Longline)



Photo Credit: Clenergy Australia



Penetrative

The penetrative range of clamps uses the existing purlin anchor points for the roofing sheet to the roof structure, to aid with fastening the solar mounting equipment. This makes the final solar PV equipment one with the roof sheet and purlins making it more secure and sturdy.

The components can be used for flush as well as tilted systems, on a large variety of roof types.

The interfaces, rails and clamps are of high quality, robust and corrosion-resistant materials including structural grade alloys.

Tilt Legs has been developed to adapt to this solution for low pitched and flat roofs. The PVezRack adjustable tilt legs arrive in options for the home to tilt the panels from 10-60 degrees. Through its innovative design, the tilt legs can cope with all common purlin distances.

Tin Roof Mounting System

Designed for Roofs with Open Fastening Points



Photo Credit: Carey Solar

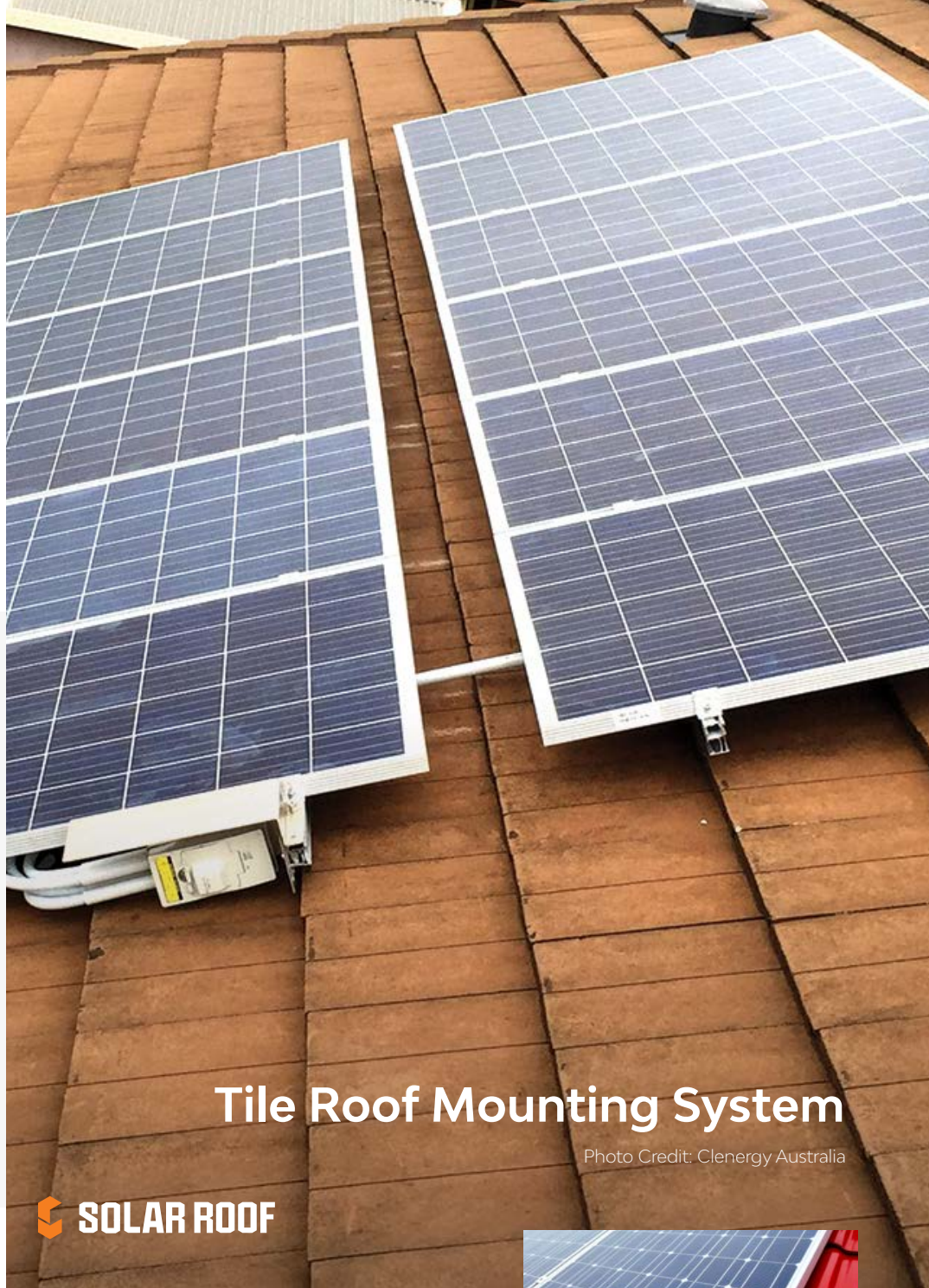


Tile

With over 10 different high-quality stainless steel variations for the tile hook interfaces – PVezRack® covers a large majority of the different types of tile roofs.

One can have their panels side-mounted or landscape to cater for special mounting needs. Roof hook extenders are also part of the range for installations on high corrugation tiles such as Spanish tiles.

The tile solution can withstand wind speeds up to 88 metres per second. With a robust design and corrosion resistance through anodised structural grade aluminium and stainless steel components, this series gives the solar mounting structure a secure base.

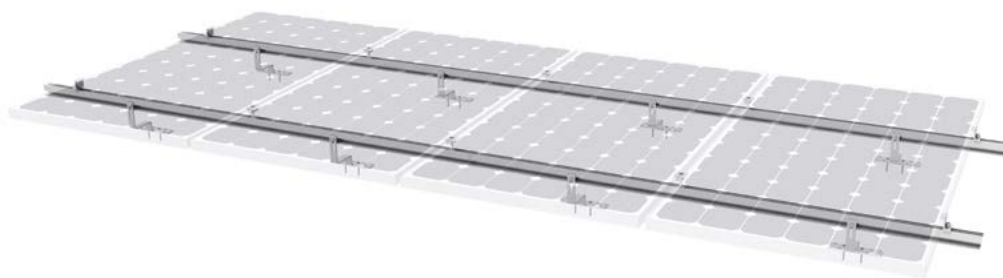


Tile Roof Mounting System

Photo Credit: Clenergy Australia



Photo Credit: Clenergy China



Adjustable Tilt

Not every residential tin roof has the ideal pitch for solar to maximise your solar production, and hence for low pitch or flat roofs, PVezRack® has developed adjustable tilts.

Adjustable Tilts from PV-ezRack® is designed to arrive pre-assembled for solar installations on flat tin roofs.

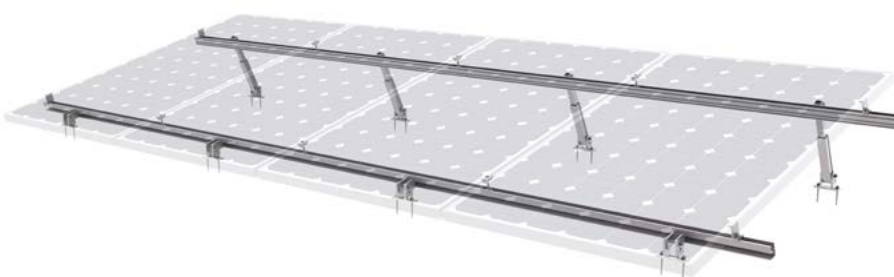
The series comes in three variants, which range in tilt degrees between 10 – 60. Through this innovative design, the tilt legs can cope with all common purlin distances.

With a versatile design and corrosion resistance through anodised structural grade aluminium, this series gives the solar mounting structure a secure base.

Panels are typical installed in portrait.

Adjustable Tilt Solar Mounting System

Photo Credit: Gardel Electrical Sservices



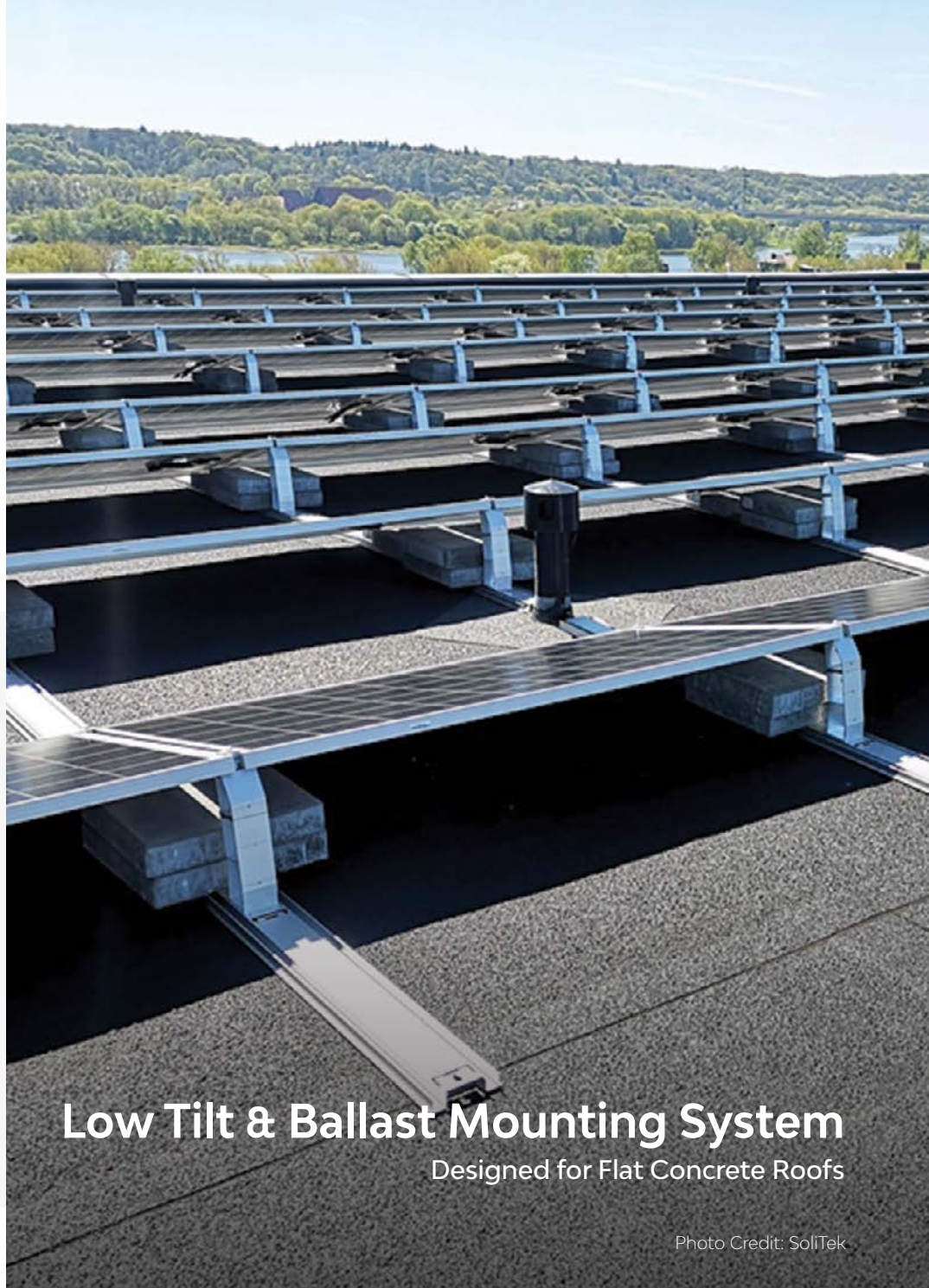
Ascent

Ascent from PV-ezRack® is a low ballast, south/north facing solution without rails for PV installation on flat roofs. This is where the solution is weighted down with concrete blocks to hold the base structure to the roof keeping it secure.

With the unique design and a tilt angle of 10° and 15° it is suitable for large solar panels dimensions up to 2180 x 1100mm & depth of 30mm to 46mm.

This series also does have an east-west alternative - Ascent Wings, which provides optimal surface utilization and yield for structurally challenging roofs with limited ballast options.

Panels are typically installed in landscape, with multiple options for directional orientation providing maximized energy production.



Low Tilt & Ballast Mounting System

Designed for Flat Concrete Roofs

Photo Credit: SolITek



ComT

ComT from PV-ezRack® is a universal and fast mounting system for solar installations on all common tin roofs. With its flexible and scalable design, it enables perfect utilisation of the roof surface available.

Available Tilt Angles:

5° / 10° / 15°

Available Orientations:

North | South | East-West

This system is adaptable to most tin roofs when coupled with our range of penetrative or non-penetrative roof clamping options. The most popular being our **Universal kliplok clamp** to aid with this solution being fastened to the roof surface.

Panels are typically installed in landscape, with multiple options for directional orientation providing maximized energy production.

Low Tilt Mounting System

Designed for Flat Tin Roofs



Photo Credit: RACV Solar



SolarBase

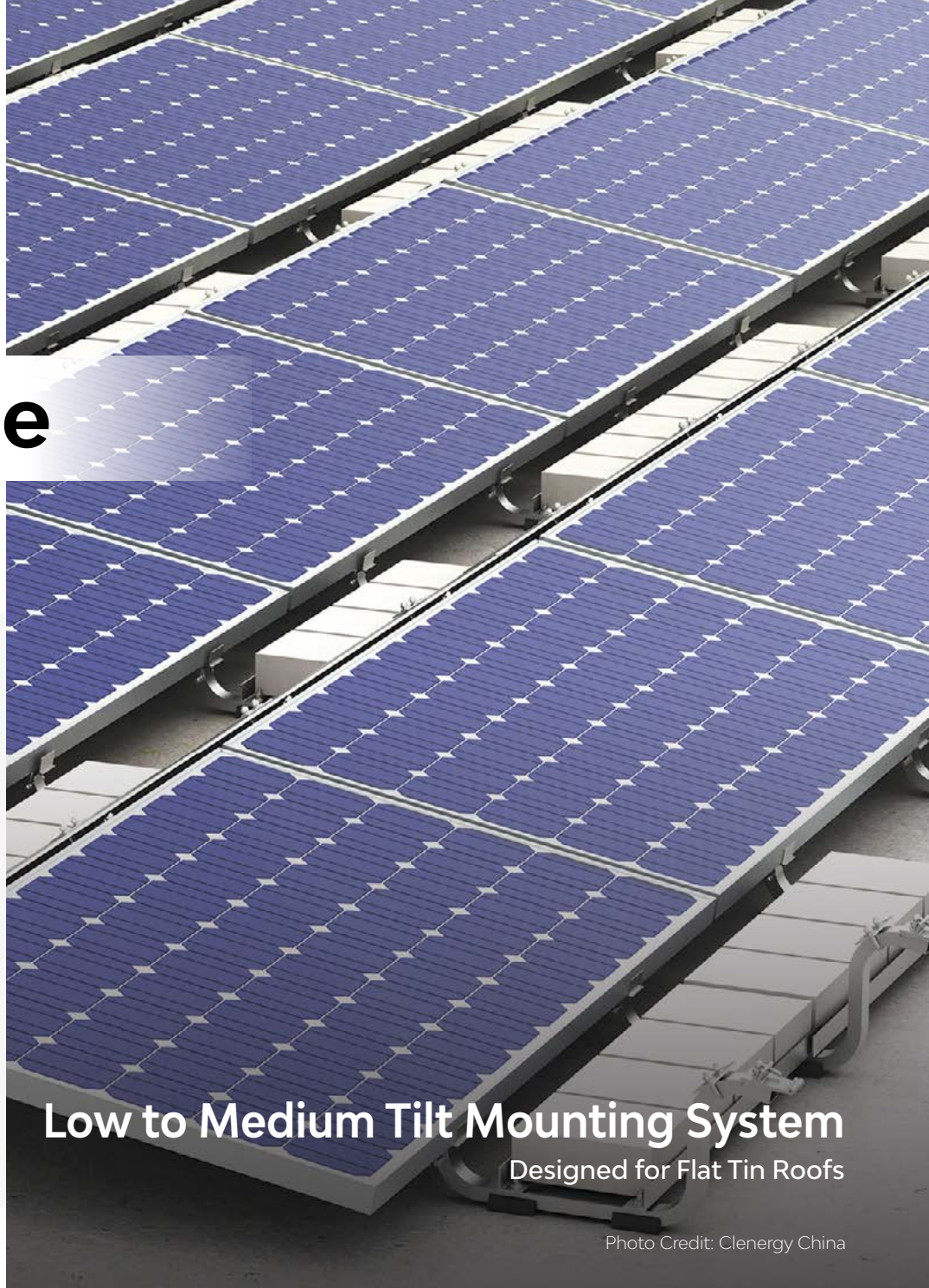
Solar-Base from PV-ezRack® is specifically designed for installation on concrete roofs. This highly-efficient design greatly simplifies installation and optimizes the use of available space. Designed to be used as a non-penetrative solution, the SolarBase system can also be adapted to be fixed tin roofs where required as custom design from our in-house engineering team. Panels are typically installed in landscape, ideally facing in the prime direction to soak up maximum irradiance for increased energy production.

Available Tilt Angles: 10°

Available Orientations:

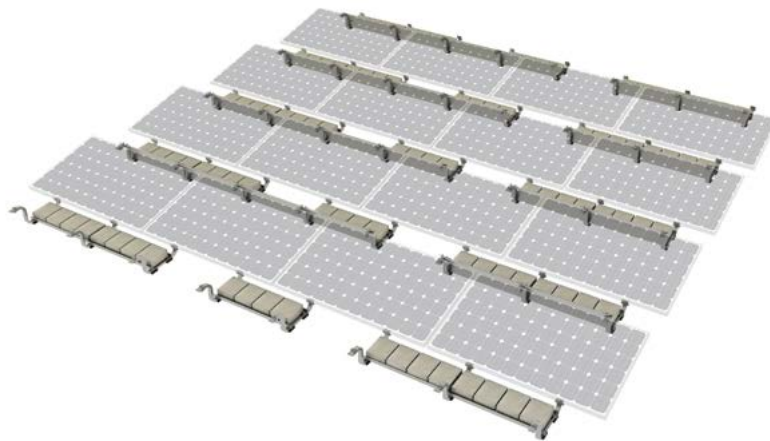
North | South

Orenitations: Landscape



Low to Medium Tilt Mounting System
Designed for Flat Tin Roofs

Photo Credit: Clenergy China



SolarTripod

SolarTripod from PV-ezRack® is designed to arrive pre-assembled for solar installations on flat tin roofs to tilt panels in a portrait orientation. The supports are available in fixed and adjustable tilt angles, in addition, they are compatible with a wide range of purlin distances.

The main advantage of this solution is mounting a double row of panels, allowing the home to have a larger number of panels on a smaller roof surface. Additionally, the SolarTripod's exceptional design allows over-coming large purlin spans. The triangular design provides a clean, secure and durable base for the longevity of the system.

Available Tilt Angles:

15° - 30°

Double Rows: Yes

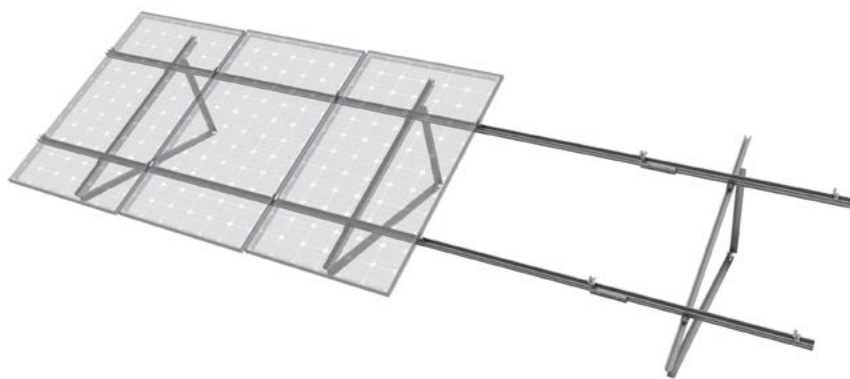
Orientations:

Portrait & Landscape

The Universal Flat Roof

Solar Mounting System

Photo Credit: Clenergy Australia



ezShade Pergola

ezShade Pergola from PV-ezRack® is the perfect mounting solution for residential concrete roofs. With an exquisite structural design and built-in waterproof functionality, this fully pre-assembled kit works well for homes that do have enough roof space for solar panels.

The waterproofing kit also uses lesser number of EPDM rubbers as compared to industry alternatives.

Tilt Angle: 5°-15°

Installation Height:
Maximum 3.5m above ground*

Base Fixture: Concrete slab (Not included) or direct to concrete roof or balcony

Applications: Balcony Shade, External ground shade - Applications are endless

Available Colours: Silver

*Custom engineering available – speak to a Clenergy team member



Photo Credit: SENE Energy



ezShade

ezShade from PV-ezRack® is an economical ground mounted solution for landscape solar panel installation that provides shelter. It is designed for high wind speed and snow loads. One can also fasten an inverter, solar battery and EV charger outlet to the side beams to make it a complete charge station.

The anodised aluminium components combined with this unique structural design result in an optimal balance between aesthetics and cost-effectiveness.

This solution has an add-on feature to make it watertight.

Size Options:

Single or Double Bay.

Tilt Angle: 5°

Installation Height:

Installed at ground level*

Shade Coverage:

Average Panels -- Single Bay – 29sqm | Double Bay – 48sqm

Large Panels ----- Single Bay – 36sqm | Double Bay – 49sqm

Base Fixture: Concrete slabs (Not included)

Applications: Carport, Backyard Shade, Bus Stop, swimming pool shade – Applications are endless

Available Colours: Silver or Clenergy Hollywood – Black

*Custom engineering available – speak to a Clenergy team member

Ground Structure Mounting System

Designed as Solar Shade

Photo Credit: Skyline Solar



Video Testimonials



James Hill
 CEO / Owner
 - Nepean Solar Solution



"..the black racking, Clenergy Hollywood Series, which gives a sleek finish and blends in perfectly to the roof."



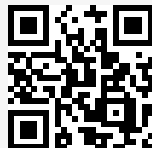
Anne Wilson
 Electrician & Solar
 Installer - SolarQuip &
 Smart Energy Lab



"..because of the versatility I was able to get the lines straight, and the big spans you can do between the L-Feet..."



Matthew Lannucci
 Owner - Swan Hill
 Solar & Electrical



"..I like the Clenergy products! They are easy to assemble, cut down the labour cost & labour time."



Ernest Gavey
 Director - Solazone



".. Clenergy product is easy to use, and you got technical support and the right guys to deal with!"

Google Reviews

Johann Fleury - Thirroul Solar & Electrical

"Superb railing system! The only brand we use. Fantastic range of Black coloured products."

Josh Overell - Recor

"Clenergy has solar panel support systems for all roof and panel types. I highly recommend Clenergy to anyone looking for a great PV panel support system."

Marco Castillo - NSW Solarenergy

"As a Designer and Installer, Clenergy products are an easy choice. With an incredible team who are very knowledgeable and easy to deal with, you can see why they're on top."

Ahmad Abu El Ezz - Downer Group

"I have been using Clenergy products for over two years now. They are on top of all Australian regulations and are realistically aligned with their customers' needs, not to mention how helpful they can be with challenging projects."

Luke Spicer - Skyline Solar

"I've used clenergy for years; no other racking company comes close to what these guys can offer, from starting at service thru to satisfaction."

Emmett Bray - SG Wholesale

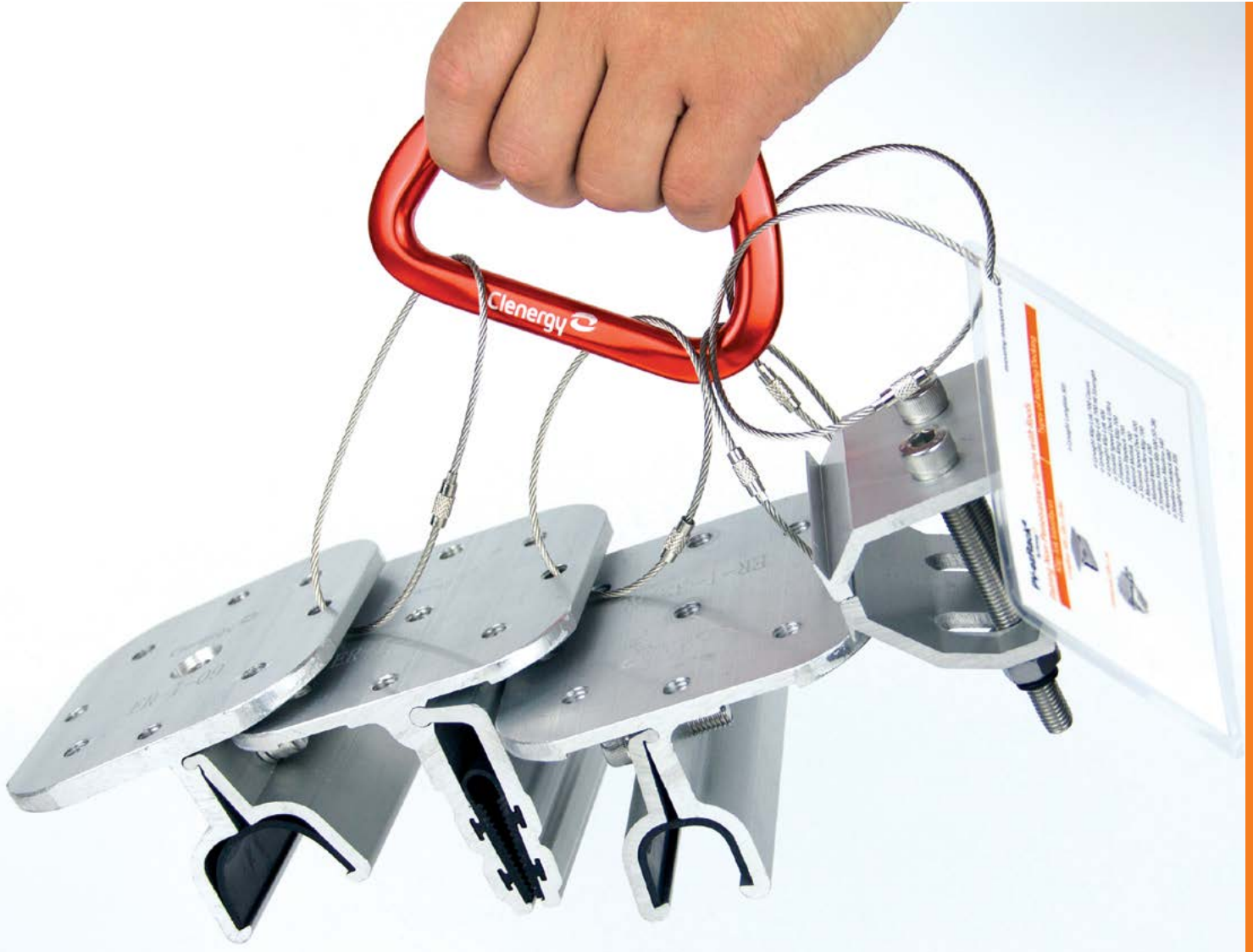
"Awesome company, super helpful sales and technical staff. Always goes the extra yard to ensure our expectations are met and exceeded."



Merch Store



Merch Store



MERCHANDISING





PV-ezRACK®

999-1009 Min'an Rd,
Huoju Hi-tech Ind. Dev. Zone
Xiang'an District 361101,
Xiamen, Fujian, China

Phone: +86 (0592) 3110088
Email: sales@clenergy.com
Web: www.clenergy.com

 @ClenergyGlobal / @ClenergyClub  @Clenergy  @ClenergyClub
 @Clenergy_global  @Clenergy

